



**Daintree**Networks



### Key benefits

- Dashboard that summarizes lighting control network status.
- Snapshot of energy usage across the system and by lighting zone.
- Easy-to-use interface for setting, managing and updating lighting control schedules and configurations.
- Multi-facility management for centralized control of dispersed facilities.
- Report generation for energy usage and zone utilization.
- Floorplan view for simple overlay of lighting control zones.
- Demand Response interface for automated and manual load reductions.
- Alert and alarm triggers based on a variety of system events.
- Easy assignment of devices to lighting control zones and other configuration tasks.
- Define user access and control restrictions based on user roles.

## ControlScope Manager

Simple-to-use Web interface for powerful lighting control and energy management applications.

Daintree Networks' **ControlScope™ Manager (CSM)** is a full-featured Lighting Management application that delivers complete control of commercial lighting functionality into the hands of facilities managers and other users. CSM is the primary user interface for Daintree-based wireless lighting control solutions that enable powerful, simple and low-cost access to energy-saving strategies such as daylighting, occupancy sensing and demand response.

Built on Daintree's ControlScope wireless platform, CSM is an easy-to-use graphical tool with advanced functionality for real-time energy management and lighting control. CSM provides Web-based access to complete lighting system and device management, enterprise-wide and individually-addressable lighting control, and energy measurement and monitoring functions – in other words, everything required to deliver intelligent building control.

### Communicate. Control. Empower.

ControlScope Manager is a Web-based software application that acts as the primary user interface for managing, configuring and monitoring a complete Daintree-based wireless lighting control solution.

Daintree-based solutions consist of one or more Wireless Area Controllers (WAC), wirelessly controlling multiple zones of interoperable lights and control devices (sensors, wall switches, ballasts and LED drivers.) Commands, configurations and associations set within CSM are routed through the WACs to lighting devices, allowing remote or on-site users to easily set up and manage system behavior in real time.

For example, a facilities manager or commissioning agent could reduce lighting levels by 10% system-wide or for individual lights, change the setting of an occupancy sensor, or move a lamp into a daylighting zone based on changing office conditions. Because CSM is Web-based, these changes can be implemented remotely and applied across multi-facility and geographically dispersed locations, at any time.



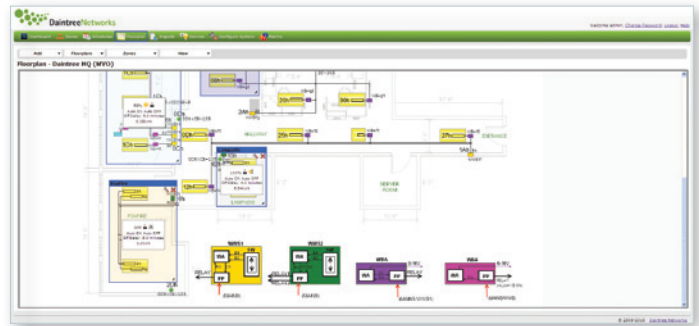
In addition, CSM empowers users with visual tools for real-time and historical lighting energy use measurement by building, zone and individual device (where available from the device). Facilities managers can use this new data to validate ongoing energy reduction projects, and empower new energy usage decisions and strategies such as utility demand response. Data within CSM can be shared and integrated with other software applications for a complete view of enterprise energy use.

Key functions of ControlScope Manager include:

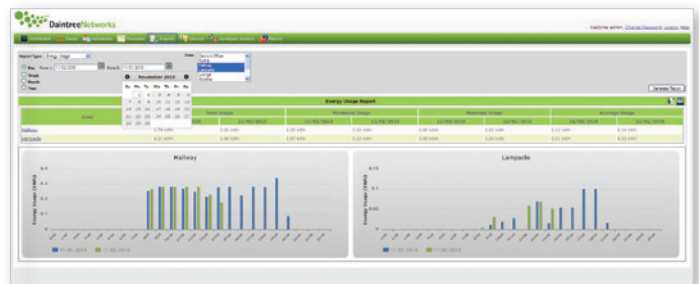
- **System configuration and management**
- **Control strategy management**
- **Energy reporting – graphical and spreadsheet**
- **Multi-facility management**
- **Alarm and event creation and tracking**
- **Logical zone setup**
- **Device configuration and query**
- **User access management**
- **Scheduling for lighting control**
- **Demand Response setup and management**

### Minimum System Requirements

Supported for use with Mozilla Firefox® Version 3.5 and later, and Microsoft Windows Internet Explorer® Version 7.0 and later.



Floorplan view enables simple overlay of lighting control zones



Generate reports for energy usage and zone utilization

### About Daintree Networks

Daintree Networks is a clean technology company using wireless innovation to improve energy management within commercial buildings. Daintree provides technology for powerful, standards-based wireless lighting control solutions that deliver substantial lighting energy efficiency improvements in a more cost-effective way than ever before.

Since its founding in 2003, Daintree Networks has been a pioneer in wireless mesh networking, with nearly 400 customers using its industry-standard design verification and operational support tool. The company has brought this extensive experience to bear in developing the industry's first truly interoperable platform for wireless lighting controls. For more information, visit [www.daintree.net](http://www.daintree.net).



**Daintree Networks, Inc.**  
1503 Grant Road, Suite 202  
Mountain View, CA 94040 U.S.A.

Phone: +1 (650) 965-3454  
email: [sales@daintree.net](mailto:sales@daintree.net)  
[www.daintree.net](http://www.daintree.net)